



Kynoppe®

switching experts

OUR MISSION

Exceeding expectations of our customers by providing innovative and competitive products, optimizing time treatment, developing, listening and analyzing their needs and positioning the responsiveness and flexibility as core values.



SUMMARY

Kynoppe expertise	4
Pushbuttons	6
PCB board switching devices	8
Automation systems	10
Sensistive solutions	12
Custom & OEM solutions	14
Our core values	16
How to contact us	18



MULTI MARKET TECHNOLOGICAL KNOW-HOW

Whatever the industrial sector which you operate in, you probably noticed that the modularity and flexibility of HMI systems (Human to Machine Interface) condition mostly the success of a product.

The great improvements made in ergonomics for consumer electronics has indeed established very high standards that are required today in the industrial world and this, whatever the sector concerned: the user interface has become a quality criteria and thereby a real differentiation tool.

Kynoppe team operates since many years on the macro-switching market of interfacing the Man with the Machine.

Key partner on the French market of manufacturers globally recognized designers, Kynoppe selects, co-develops and markets a wide range of switch products for diversified markets: industrial automation, medical, telecommunications, aerospace, transportation, defense, agriculture etc.

Whatever your core market is, Kynoppe team offers its extended technology offering,, responsiveness, flexibility and know-how in switching technologies at the service of your application.



handling and maintenance



agriculture



security, alarm and access control



aéronautics



roads and automotive equipment



railway and railroads equipment



medical



AV and multimedia systems



consumer electronics



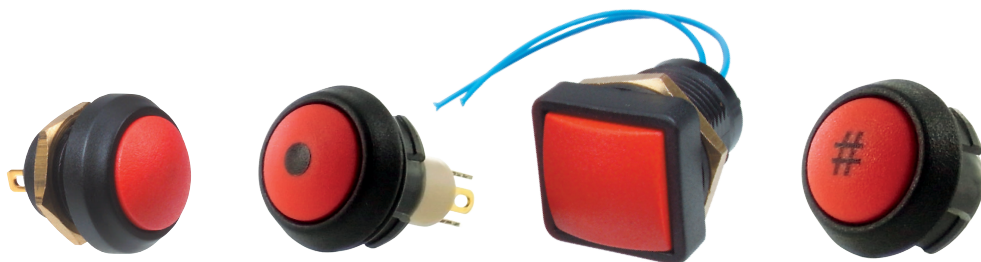
heavy vehicles

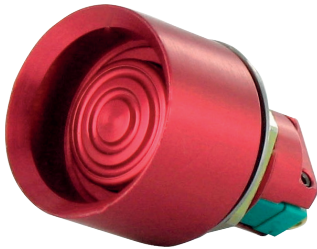
PANEL MOUNT PUSHBUTTONS & SWITCHES

Through its range INTER.PANEL, Kynoppe provides its customers with a wide range of pushbuttons and switches for panels: IK10 robustness and shock-resistant, tamper-proof, resistant to frost or led lighted with a wide choice of colors and backlight.

From a drilling diameter of 13.6 mm to 30 mm, most of buttons provided by Kynoppe are IP67 sealed.

Those buttons, powered with electromechanical technology or hall effect based contact and because of their top design and quality manufacturing are insured for hundreds of thousands of cycles.





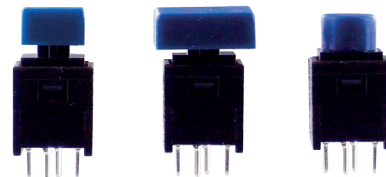
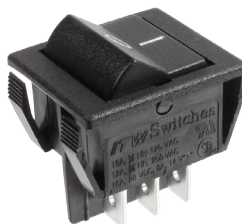
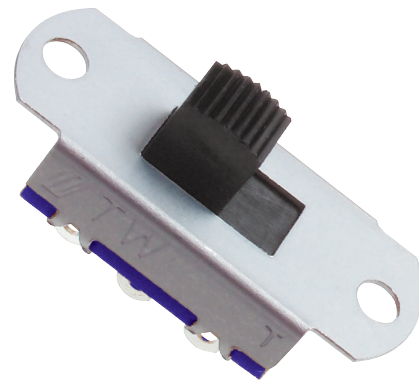
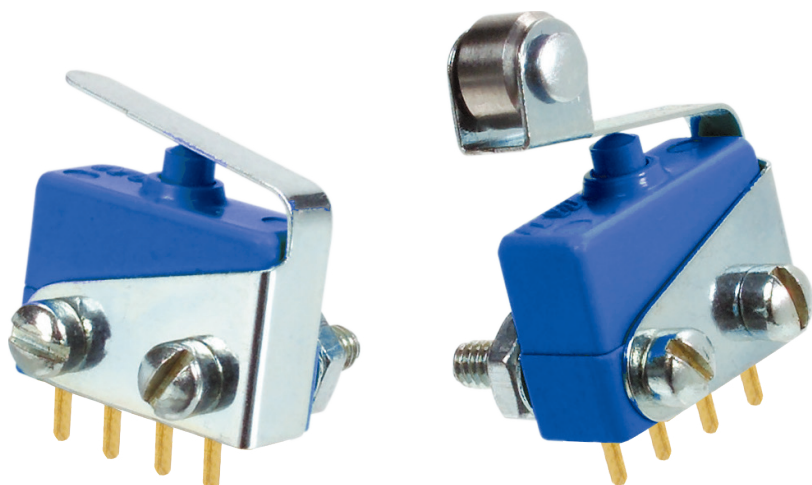
PCB MOUNTED SWITCHING DEVICES

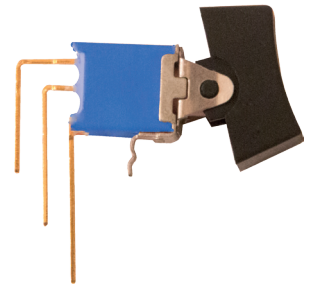
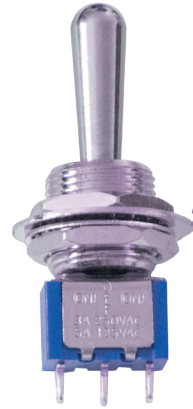
INTER.PCB is a full range of switches to be mounted on printed circuit boards and allowing fine and precise control of your application: toggle switches rocker switches or slide & DIP switches, tact and key switches and microswitches ...

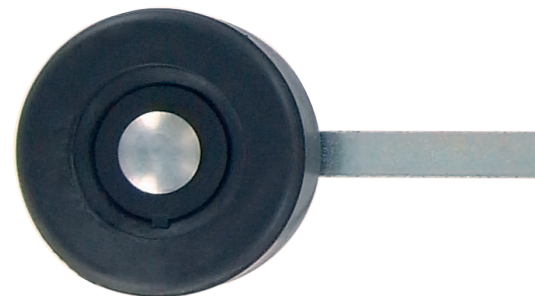
For each product type many options and accessories are available on request : LED backlight, normally open and / or normally closed contact, length and geometry of the pines, sealing caps, size or color of the levers of the keys. An almost infinite choice through which Kynoppe team will find the solution that will magnify your application.



INTER.PCB





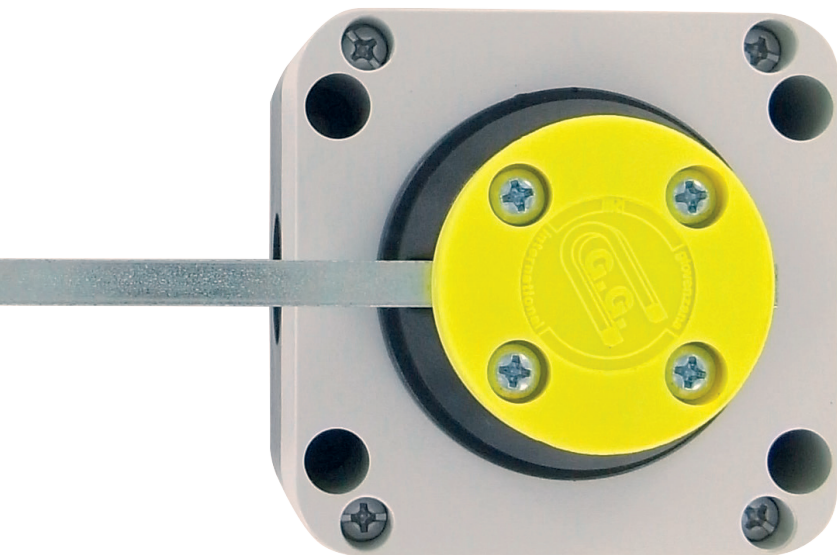


AUTOMATION SYSTEMS

Our INTER.AUTO range is designed to meet the requirements of reliability and resistance from demanding industrial and maintenance applications: pushbuttons and limit switches for the elevator, pendant stations for lifting, complete systems for cranes or logistics centers, mushrooms switches, cam switches, emergency stop devices or disconnectors for controlling machines or devices integrated into any cabinet or control panel ... all components are EU made and received numerous international approvals ensuring worldwide recognition.



INTER.AUTO



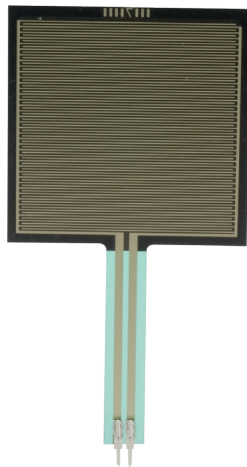
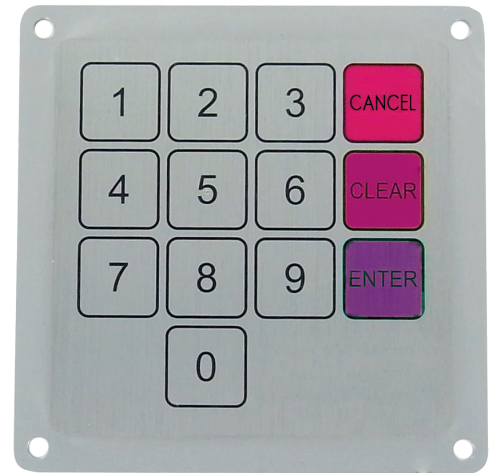
SENSITIVES SOLUTIONS

Specifically designed to meet the numerous requirements of applications for harsh environments and applications where the interface of the man to the machine must be facilitated and popularized, the sensitive interfaces are more and more used as the user-friendly solution for switching.

Kynoppe has chosen to integrate its range INTER.SENSE three complementary technologies: Force Sensing FSR® Resistor® (Interlink), piezoelectric (Everswitch) and Chameleon® (patented intelligent capacitive technology from ITW Switches).

Keyboards, buttons, cured mice, position sensors and tactile pressure drives ... All products from INTER.SENSE allows to cover all the needs and functions and adapt to them thus offering the ideal HMI to your app.





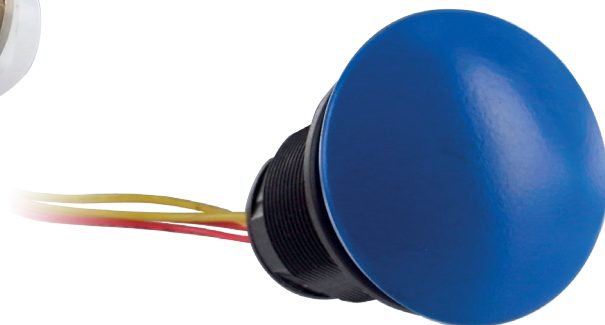
OEM & CUSTOMIZED SOLUTIONS

Despite the extensive range of products offered by Kynoppe, it may be that your need is not 100% satisfied ...

To answer it accurately, Kynoppe offers its expertise and technical knowledge of its manufacturing partners: specific marking of a button, custom backlight, and custom wiring, individualized packaging are some of the many possibilities for adapting our standardized products to your needs.

If however your prerequisites required the development of a specific interface, Kynoppe and its design office Diamelec have the skills and ad'hoc tools to assist you in the development of a complete solution: from the choice of the switching technology to implement, to the design through the development of any software;

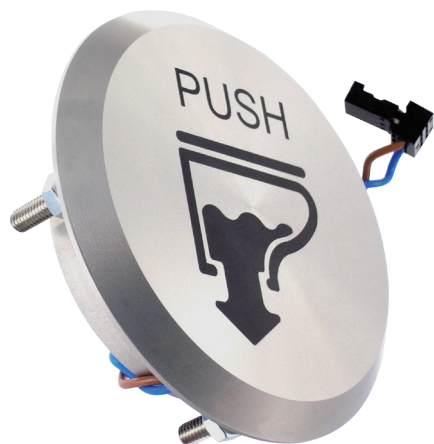
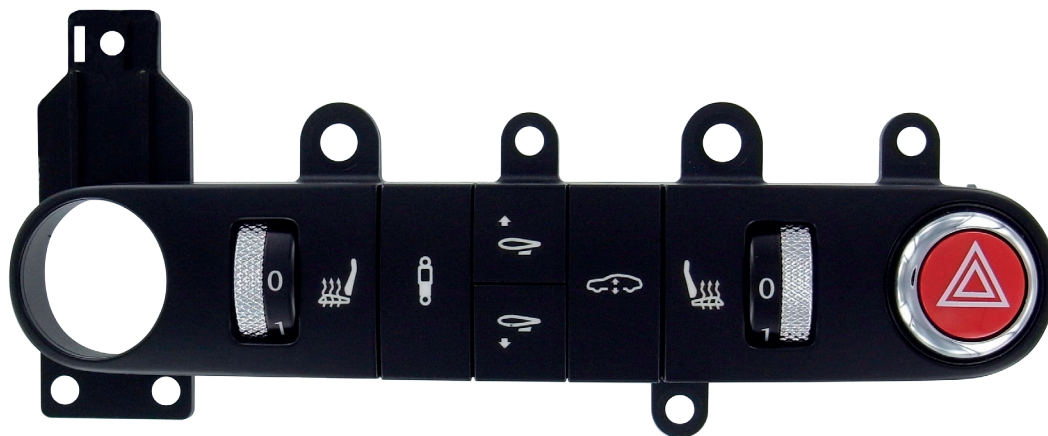
To cut a long story short, always at your side to help you anticipate and innovate ...



ITW Switches
SENSORS, SWITCHES, ELECTRONIC CONTROLS



EVERSWITCH™



INTERNATIONAL CERTIFICATIONS AND RULES

Kynoppe works closely with its industrial partners and ensures that global quality is the foundation of their strategy. To meet the needs of our customers and the standards of the largest industrial countries, our partners carry the greatest care to put on the market products with certificates and major international approvals such as cULus, IMQ, VDE, CCC, RINA, PCT and CE course.

Moreover, mindful of the respect and protection of the environment, Kynoppe is daily committed in a sustainable development approach by implementing actions to streamline processes, reduce energy consumption and reduce waste.

Finally, closely following the European requirements, all components proposed by Kynoppe meet the latest EU standards such as the RoHS & WEEE and REACH.

This is what we call Responsibility with a big R.







Kynoppe S.A.S.

18 avenue Raspail
Batiment C
94100 Saint-Maur-des-Fossés
France

Tel. +33 1 48 75 92 76

Fax. +33 1 48 75 75 18

sales@kynoppe.com



www.kynoppe.com



[@Kynoppe](https://twitter.com/Kynoppe)



[Kynoppe](https://www.linkedin.com/company/Kynoppe)

switching experts



let's scan this and see our latest products !